

**PHILIPS**

**hue** personal  
wireless  
lighting

White and color  
ambiance



Indoor &  
outdoor use

Go  
Portable table lamp



Bring personalised smart lighting anywhere

1

On product control:  
Turn on and change light effect



ON\* Short single press



\*Place lamp on charging base and connect to power before first use

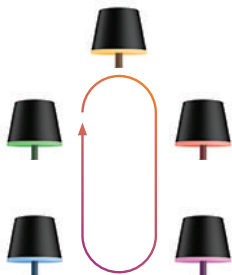


2

On product control:  
Browse through all colors



Double press and hold



Repeat to reverse  
the loop



3

## On product control: Standby mode

Long press  
(2 sec.)

=

Standby mode

=



>12h =

Battery  
save mode

=



4

On product control:  
Battery save mode



Press  
>10 sec  
=  
Batterysave mode

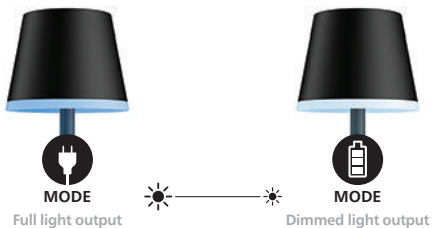
Blink 2x  
.....>.....



OFF

5

## Smart battery management: Brightness



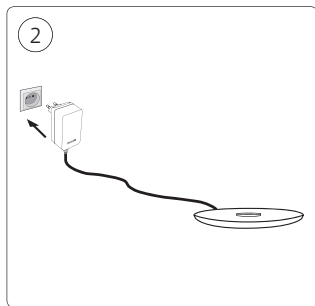
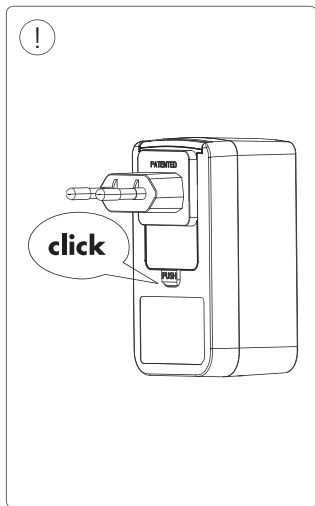
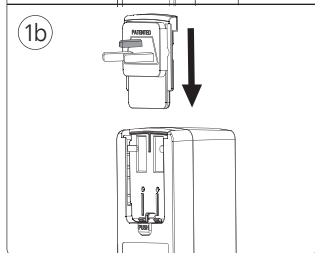
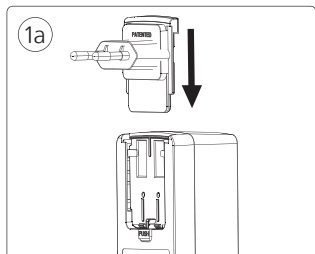
6

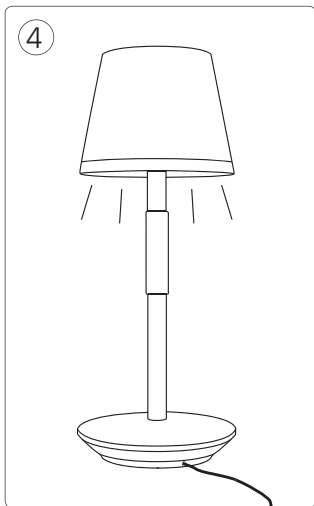
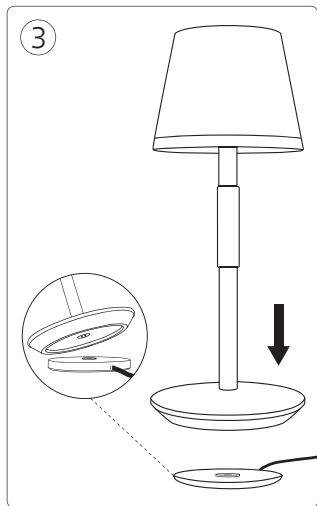
## Smart battery management:



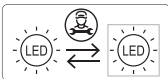
## Battery life

 Cozy candle		 ≈ 36h	 Nightlight		 ≈ 48h
 Night Adventure		 ≈ 24h	 Dimmed		 ≈ 20h
 Enchanted Forest		 ≈ 10h	 Relax		 ≈ 9h
 Meditation		 ≈ 6h	 Read		 ≈ 5h
 Sunday Coffee		 ≈ 6h	 Concentrate		 ≈ 5h
			 Energy		 ≈ 5h









For the purposes of recharging the battery only use the detachable supply unit model S012CTM1200100C



**EN** - SAFETY INSTRUCTIONS/ISR 18650 – Lithium ion / The non-replaceable batteries shall be removed by a professional when disposing your product. **DE** - SICHERHEITSHINWEISE/ISR 18650 – Lithium-Ionen / Nicht austauschbare Batterien / Akkus müssen bei der Entsorgung des Produkts von einer fachkundigen Person entfernt werden. **FR** - INSTRUCTIONS DE SÉCURITÉ/ISR 18650 – Pile lithium-ion / Les batteries non remplaçables doivent être retirées du produit par un professionnel avant la mise au rebut. **ES** - INSTRUCCIONES DE SEGURIDAD/ISR 18650 - lones de litio / Un profesional debe retirar las baterías no reemplazables cuando se deseche el producto. **PT** - INSTRUÇÕES DE SEGURANÇA/ISR 18650 – lões de lítio / As pilhas não substituíveis devem ser removidas por um profissional quando o produto for eliminado. **IT** - ISTRUZIONI DI SICUREZZA/ISR 18650 – loni di litio / Le batterie non sostituibili devono essere rimosse da un professionista durante lo smaltimento del prodotto.



Signify

I.B.R.S. / C.C.R.I. Numéro 10461  
5600 VB Eindhoven,  
the Netherlands  
☎00800-74454775

Signify Australia Limited  
65 Epping Road, North Ryde,  
NSW, 2113 Australia  
Toll Free number: 1300 304 404

Signify New Zealand Limited  
123 Carlton Gore Road  
Newmarket, Auckland 1023  
New Zealand  
Tel: 0800 4 LAMPS (52677)

Distributed by:  
Signify Hong Kong Limited  
Hotline (852)23530777

© 2023 Signify Holding  
All rights reserved

[www.philips-hue.com](http://www.philips-hue.com)

4422 955 98232

Last update: 02/2023